

## RECOMMENDATION 3: An Integrated, Complete, and Diverse Park System



The South Platte River Trail



Northside Park

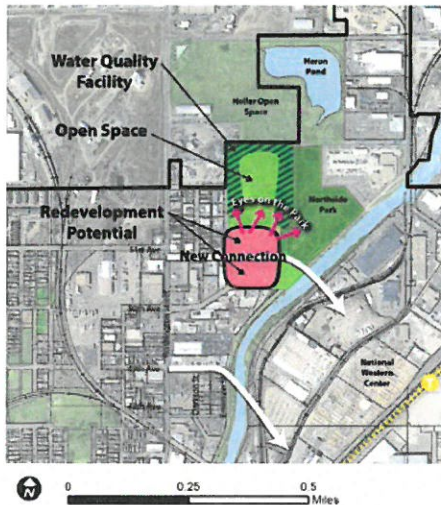


Diagram showing a potential large, regional open space that is integrated with Heller Open Space, Heron Pond, and portions of Northside Park. New development fronts 51st Avenue, with the northern parcel adjacent to the open space being reserved for a community-serving use.

### B10. EMBRACE THE SOUTH PLATTE RIVER.

By embracing the South Platte River, Globeville can maximize the benefits of many of its existing green space assets.

- **B10A. Create a Waterfront Destination.** Create a waterfront destination along the South Platte River that reflects the community and its unique character, provides a diversity of activities and events throughout the year, and is welcoming and safe.
- **B10B. An Activated Waterfront Plaza.** Consider creating a waterfront plaza amenity close to the South Platte River for year-round activities with opportunities for synergy with the proposed National Western Center. Ensure that the plaza is well-connected to nearby green space, the South Platte River Trail, and the local street network.
- **B10C. Integrate Regional, Sub-Regional, and On-Site Water Quality and Green Infrastructure.** To ensure that the South Platte River and amenities along the river are safe for the public and support habitat, water quality facilities should be incorporated into new parks.
- **B10D. Create a Regional Open Space Amenity.** Create a large, regional, and consolidated park amenity by integrating Heller Open Space, Heron Pond, portions of Northside Park, and a portion of new acreage known as 52nd Avenue and Emerson Street and re-designing the area primarily as a natural area with educational and passive recreational activities.
  - Respect and enhance the natural area designation with natural and native plantings and soft trails, etc.
  - Integrate stormwater management facilities with the park design.
  - Increase “eyes on the park” by surrounding it with a mixture of uses, including mixed-use development along the southern edge of the 52nd Avenue and Emerson Street site fronting 51st Avenue. Ensure that future development on this portion of the site benefits the neighborhood by restricting its sale to a community-serving user such as a senior housing provider, education or recreation center, or other uses to be defined with neighborhood input at a later date.
  - Connect this new regional open space amenity to the proposed Mixed Use Concept Land Use redevelopment area to the south.
  - Look for opportunities to create synergy and capitalize on proximity to the proposed National Western Center.
  - Enhance the routes to the park from Washington Street and the South Platte River.
  - Engage with the community in creating the specific integrated park design moving forward.
- **B10E. Enhance the South Platte River Trail Access Points.** Improve awareness of and accessibility to the South Platte River Trail through a

## RECOMMENDATION 3: An Integrated, Complete, and Diverse Park System

combination of strategies:

- Provide clear and well-marked signage along streets that lead to the point of access.
- Consider providing identifiable gateway structures to indicate the point of access.
- Ensure that all trail access points are accessible to people of all ages and physical abilities.
- Incorporate surrounding land uses and site design to better announce and celebrate the trail access points.
- Create new publicly-accessible trail access points in conjunction with new development, or as opportunities arise.

### B11. STRENGTHEN EXISTING PARK AND RECREATIONAL ASSETS.

Enhance existing parks and recreational facilities throughout Globeville to provide a vibrant system of parks and recreation centers, each with its own identity and service niche.

- **B11A. Argo Park.** This park is located in the center of Globeville and is highly valued by residents as a neighborhood destination and gathering place. Continue to explore enhancements to the park, including but not limited to:
  - Walking and biking paths to provide improved circulation around and through the park.
  - Organized events in addition to those already occurring such as Old Globeville Days.
  - A community message board for the public posting of events and flyers. This amenity would provide a new outlet for grassroots communication and further solidify Argo Park as the heart of the neighborhood.
  - Other amenities that may be deemed appropriate for the park subject to additional public input and discussion.
- **B11B. Stapleton Recreation Center and Broadway Park.** This is Globeville's City-run recreation center. The adjacent small park features a playground. Recommendations include, but are not limited to:
  - Consider changing the name of the Stapleton Recreation Center to a different name. The name "Stapleton Recreation Center" is confusing as the name "Stapleton" is now more commonly known as a new neighborhood in east Denver with some 17,000 residents.
  - Explore facilities planning and funding opportunities to improve and update the amenities and services that are provided at the Center.



*Stapleton Recreation Center*



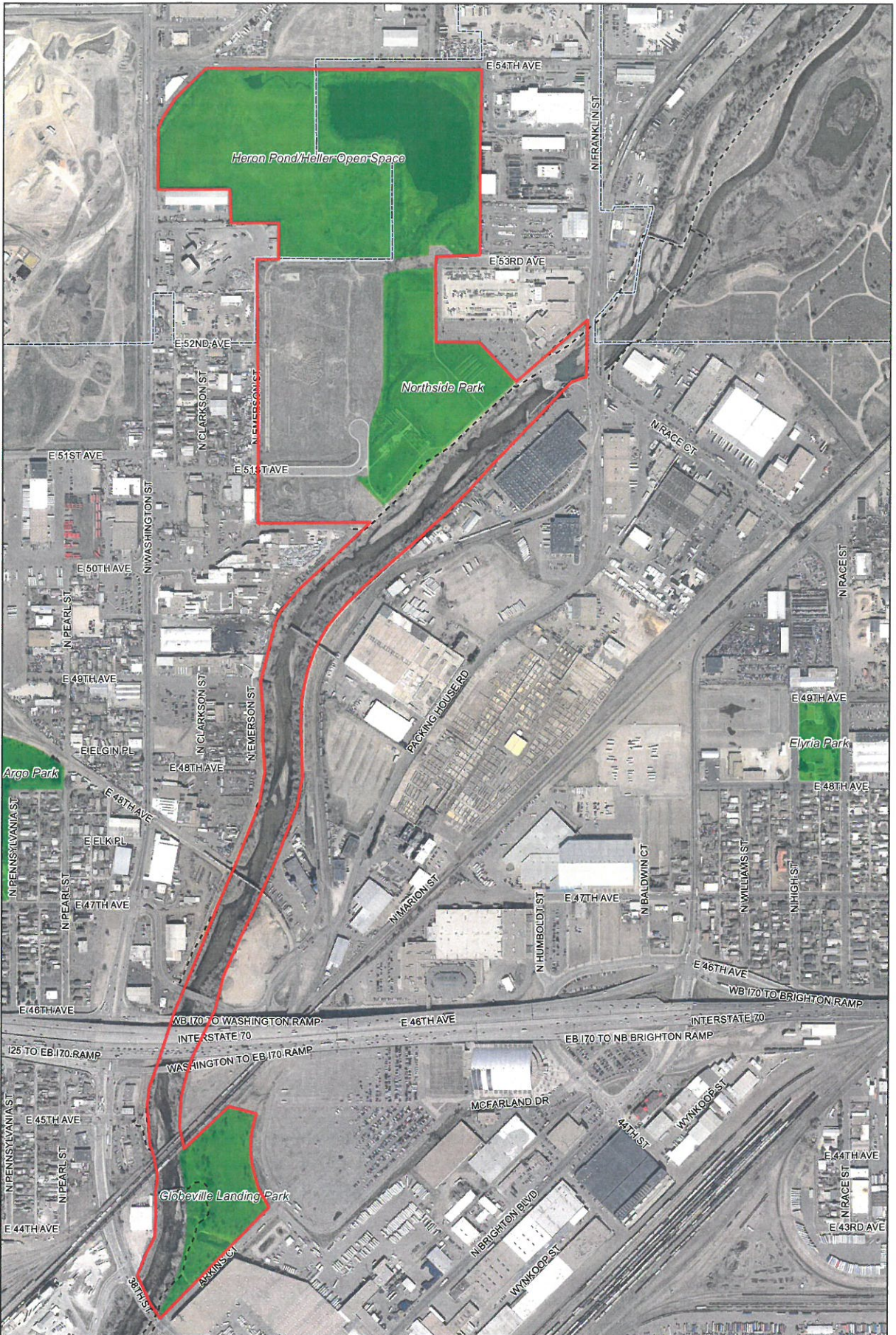
*Argo Park*



#### HIA STRATEGIES RELATED TO THIS RECOMMENDATION:

**D8. Incorporate Water Quality in Open Space Design.** Implement recommendations from the *River North Greenway Master Plan* to improve water quality. Where possible, use existing park areas without affecting existing uses to incorporate water quality treatment features, such as wetlands, to restore wildlife habitat along the river or in Heron Pond.

**D13. Connect to Greenspace.** Improve connectivity to parks, trails and recreation, especially to the South Platte River trails and parks.



**Heron Pond/Northside Park**  
 Master Plan Project Boundary



The City and County of Denver shall not be liable for damages arising out of the use of this information. This information is provided "as is" without warranty of any kind, express, implied, including, but not limited to the fitness for a particular use.

